

max. 300 bar

Breaker

Achtung / Attention

**Not to use in ceramic
pipesystems!**



Kapitel
chapter

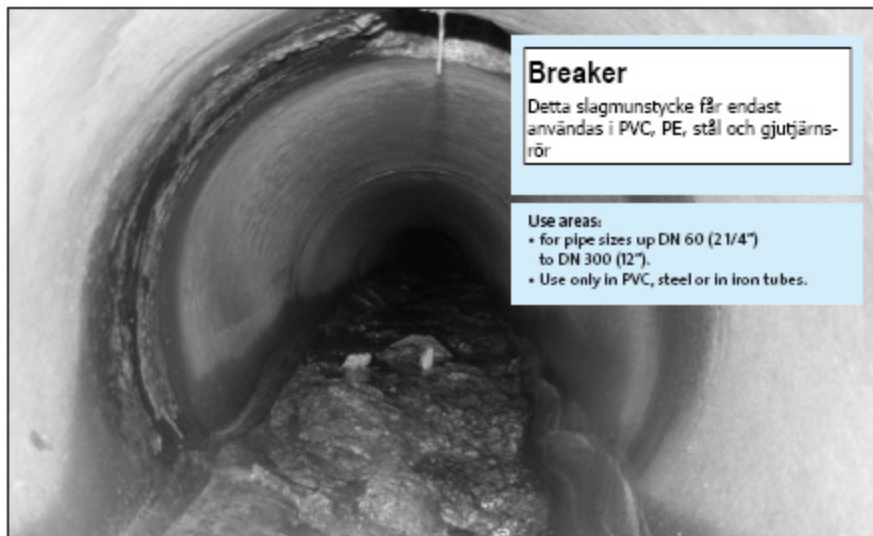


3.1

The rotor of the nozzle is eccentrically supported, which causes enormous vibrations and pulsating water jets. These vibrations can break deposits of up to 10 cm thickness. Application DN100-1000 mm, dimension DN60-50 mm.

Order-No.	Designation	Weight Kg	Dimension mm	Connection	Inserts	Scope of application from
2965	Breaker 12	0,8	L x Ø 83x40	1/2"	4xM4 Keramik/ceramic / Drills	Ab /2 DN 70-100
2966	Breaker 1	1,8	L x Ø 103x60	1"	4xM6 Keramik/ceramic / Drills	Ab /2 DN 100-300

/ use area



Breaker

Detta slagmunstycke får endast användas i PVC, PE, stål och gjutjärnsrör

Use areas:

- for pipe sizes up DN 60 (2 1/4") to DN 300 (12").
- Use only in PVC, steel or in iron tubes.



Hemsida: www.vretmaskin.se, E-post: info@vretmaskin.se